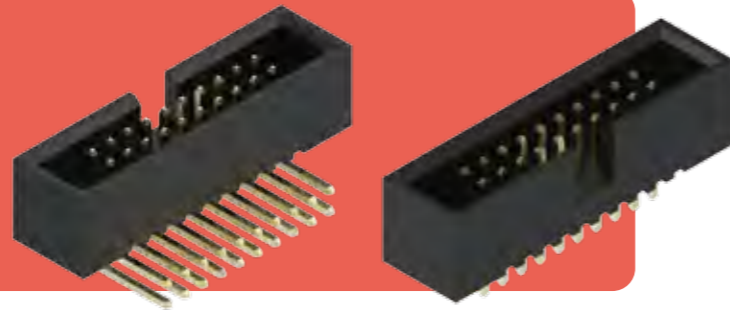


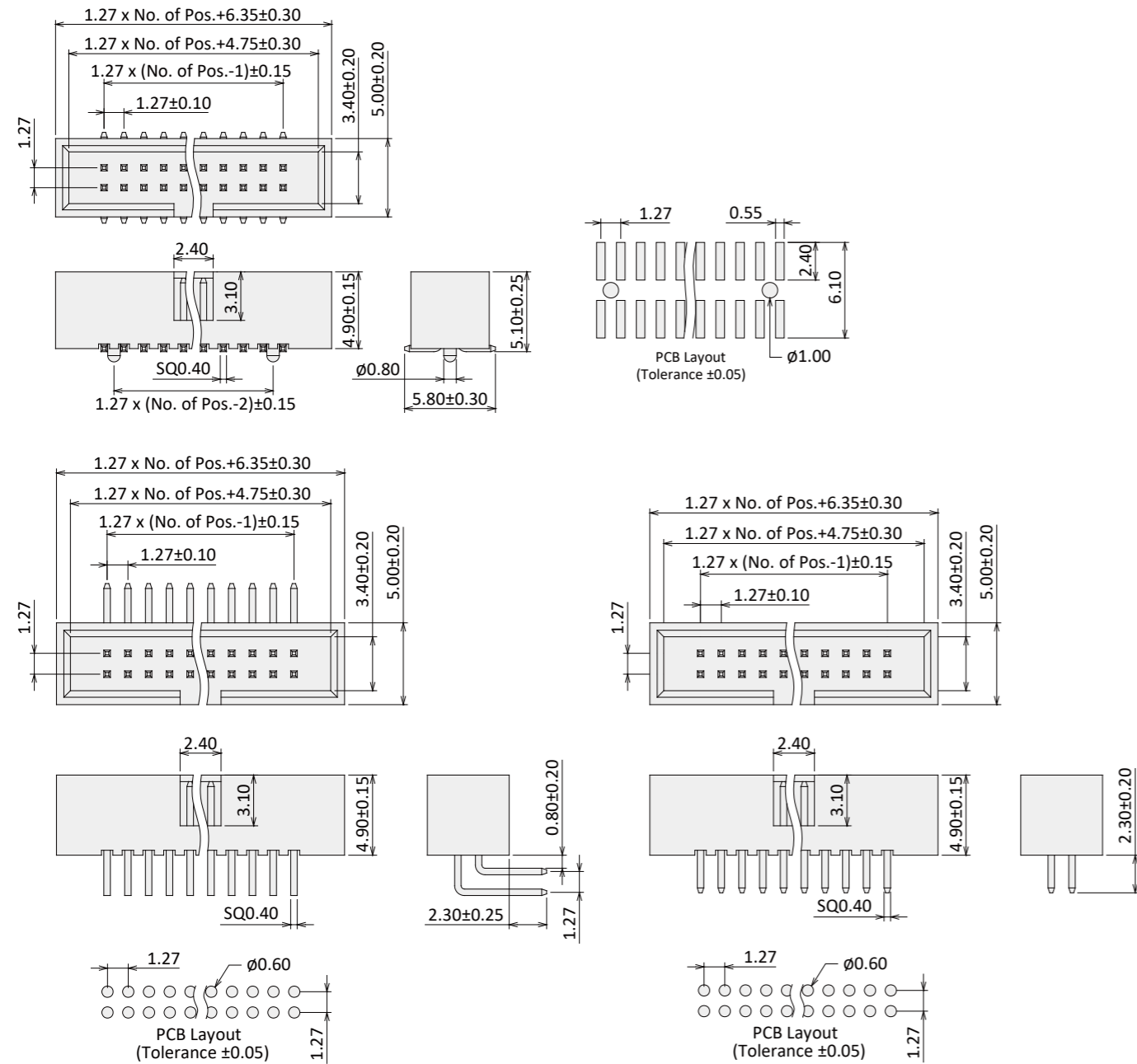
# Box Header

Current Rate: 1A  
 Dielectric Voltage: 500V AC for one minute  
 Insulation Resistance: 1000MΩ Min.  
 Contact Resistance: 20mΩ Max.  
 Material Contact: Copper Alloy, Gold Plated  
 Material Insulator: Nylon 6T, UL94V-0  
 Operating Temperature: -40°C~+105°C



Box Header

## Box Header SMT / Right Angle / Straight Type 1.27mm Pitch

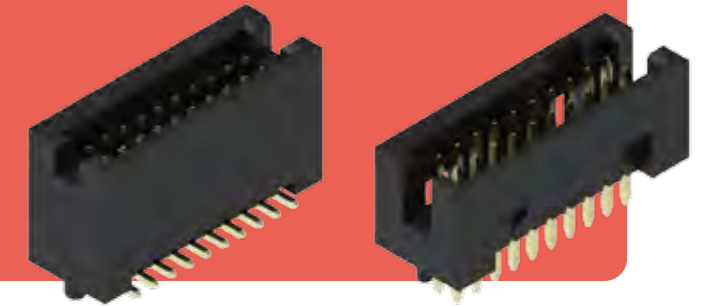


## Order Information

J X 12 XX 2 - XX X X  
 M: SMT  
 R: Right Angle  
 L: Straight  
 1.27mm Pitch  
 G0: Gold Flash  
 S0: Gold / Tin  
 2: RoHS + NY 6T  
 No. of Contacts (10~50)  
 Y: Tray  
 T: Tube  
 P: Cap + Tube  
 R: Cap + Reel  
 (P / R for SMT)  
 Blank: W/O Peg  
 P: With Peg  
 (SMT Only)

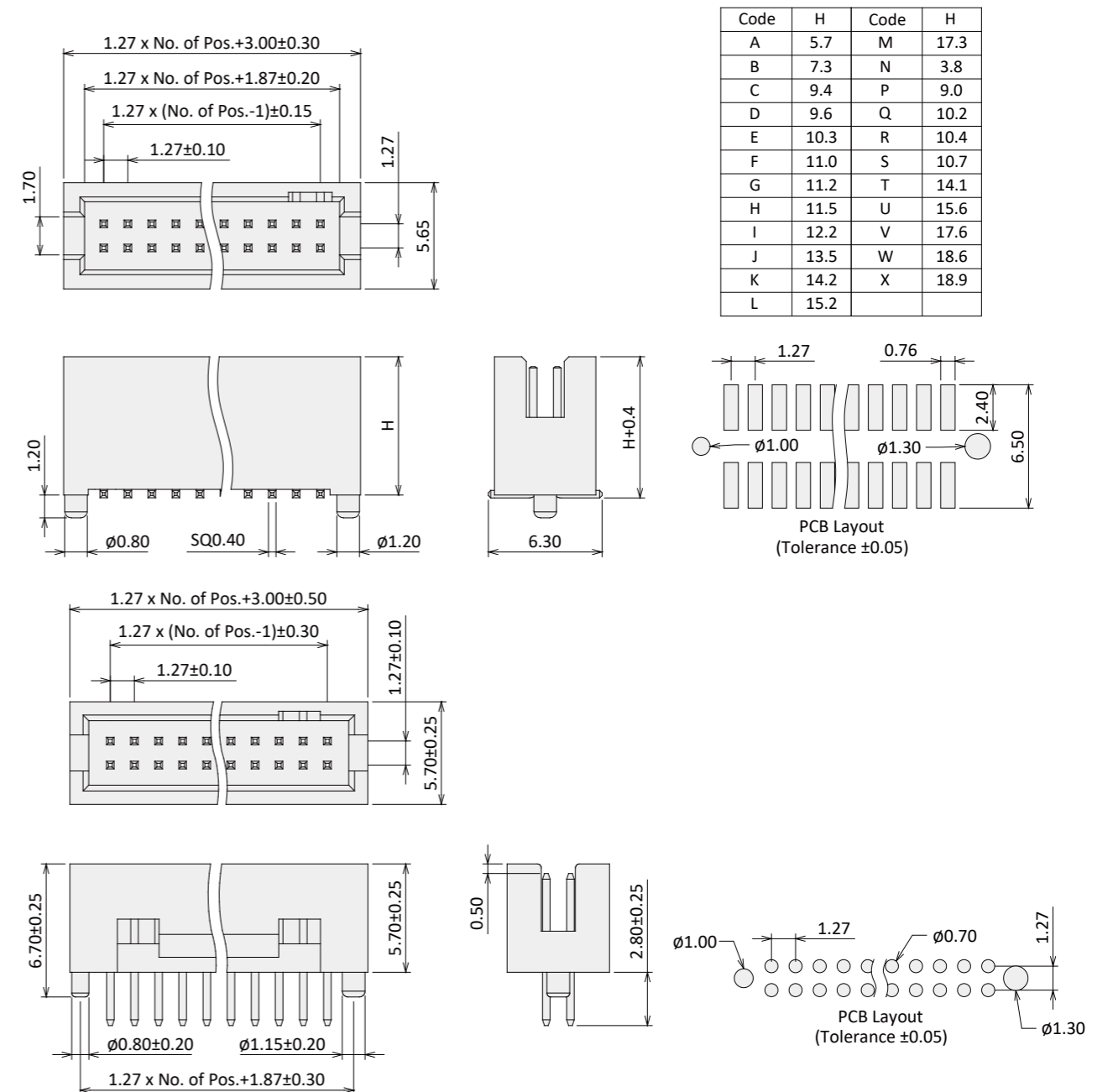
# Box Header

Current Rate: 1A  
 Dielectric Voltage: 500V AC for one minute  
 Insulation Resistance: 1000MΩ Min.  
 Contact Resistance: 20mΩ Max.  
 Material Contact: Copper Alloy, Gold Plated  
 Material Insulator: Nylon 6T, UL94V-0  
 Operating Temperature: -40°C~+105°C



Box Header

## Box Header SMT / Straight Type 1.27mm Pitch



| Code | H    | Code | H    |
|------|------|------|------|
| A    | 5.7  | M    | 17.3 |
| B    | 7.3  | N    | 3.8  |
| C    | 9.4  | P    | 9.0  |
| D    | 9.6  | Q    | 10.2 |
| E    | 10.3 | R    | 10.4 |
| F    | 11.0 | S    | 10.7 |
| G    | 11.2 | T    | 14.1 |
| H    | 11.5 | U    | 15.6 |
| I    | 12.2 | V    | 17.6 |
| J    | 13.5 | W    | 18.6 |
| K    | 14.2 | X    | 18.9 |
| L    | 15.2 |      |      |

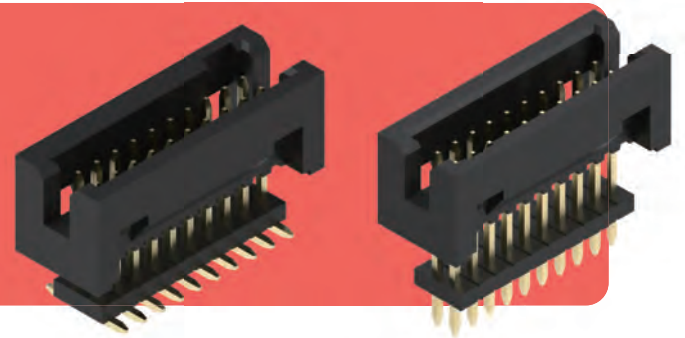
## Order Information

JA X 12 XX 2 - XX X X X  
 M: SMT  
 L: Straight  
 1.27mm Pitch  
 G0: Gold Flash  
 S0: Gold / Tin  
 2: RoHS + NY 6T  
 No. of Contacts (08~100)  
 Insulator Height  
 H: See Table  
 Y: Tray  
 T: Tube  
 P: Cap + Tube  
 R: Cap + Reel  
 (P / R for SMT)  
 Blank: W/O Peg  
 P: With Peg

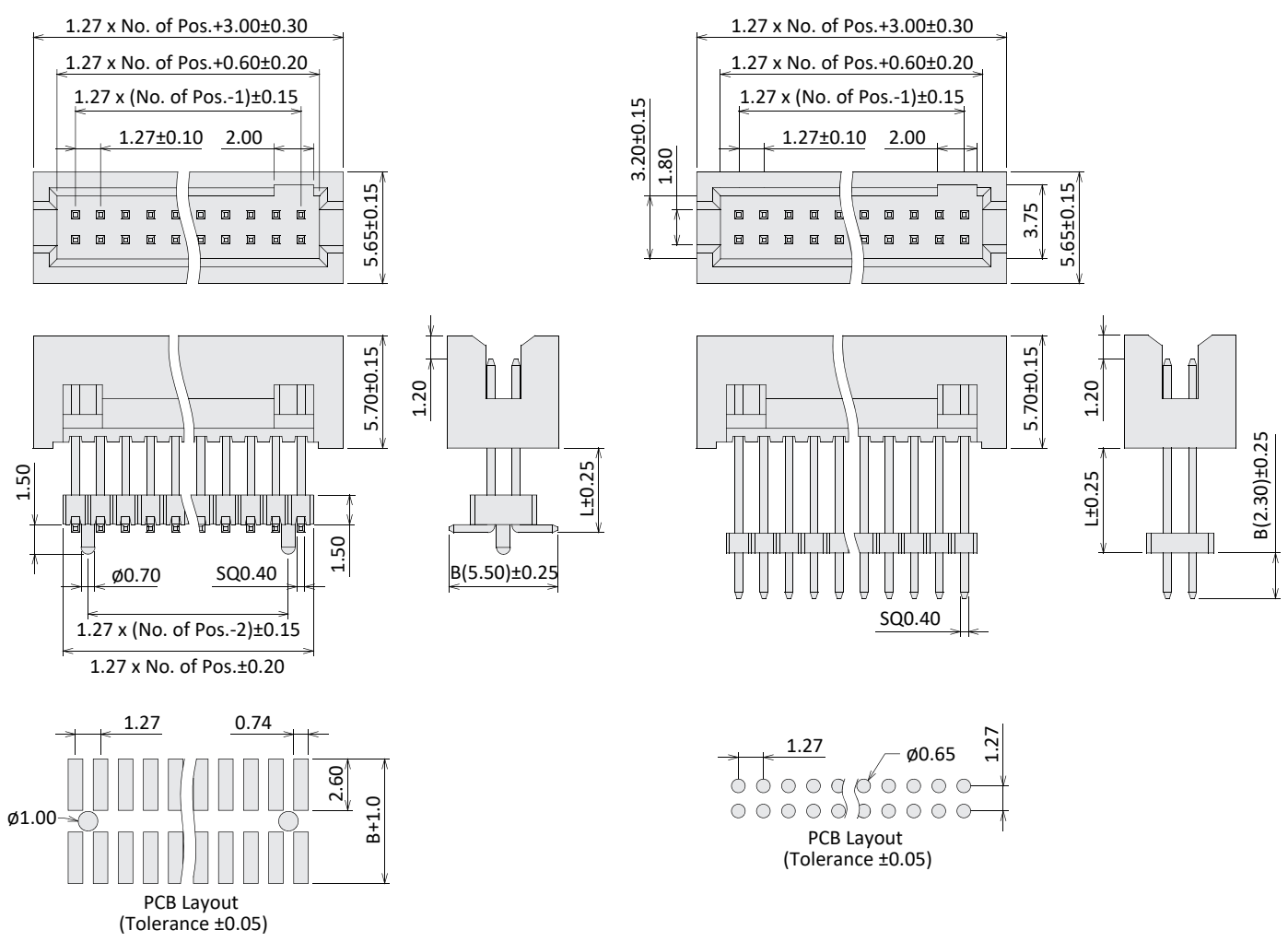
# Box Header

Header & Socket

Current Rate: 1A  
 Dielectric Voltage: 500V AC for one minute  
 Insulation Resistance: 1000MΩ Min.  
 Contact Resistance: 20mΩ Max.  
 Material Contact: Copper Alloy, Gold Plated  
 Material Insulator: Nylon 6T, UL94V-0  
 Operating Temperature: -40°C~+105°C



## Box Header Elevated SMT / Elevated Straight Type 1.27mm Pitch



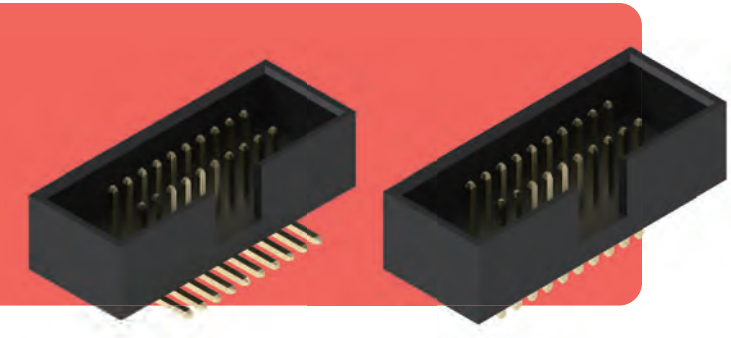
## Order Information

J XX 12 XX 2 - XX - L/B X  
 EM: Elevated SMT  
 EL: Elevated Straight  
 1.27mm Pitch  
 G0: Gold Flash  
 S0: Gold / Tin  
 2: RoHS + NY 6T  
 No. of Contacts (08~100)  
 Dimensions L, B  
 Blank: W/O Peg  
 P: With Peg (SMT Only)

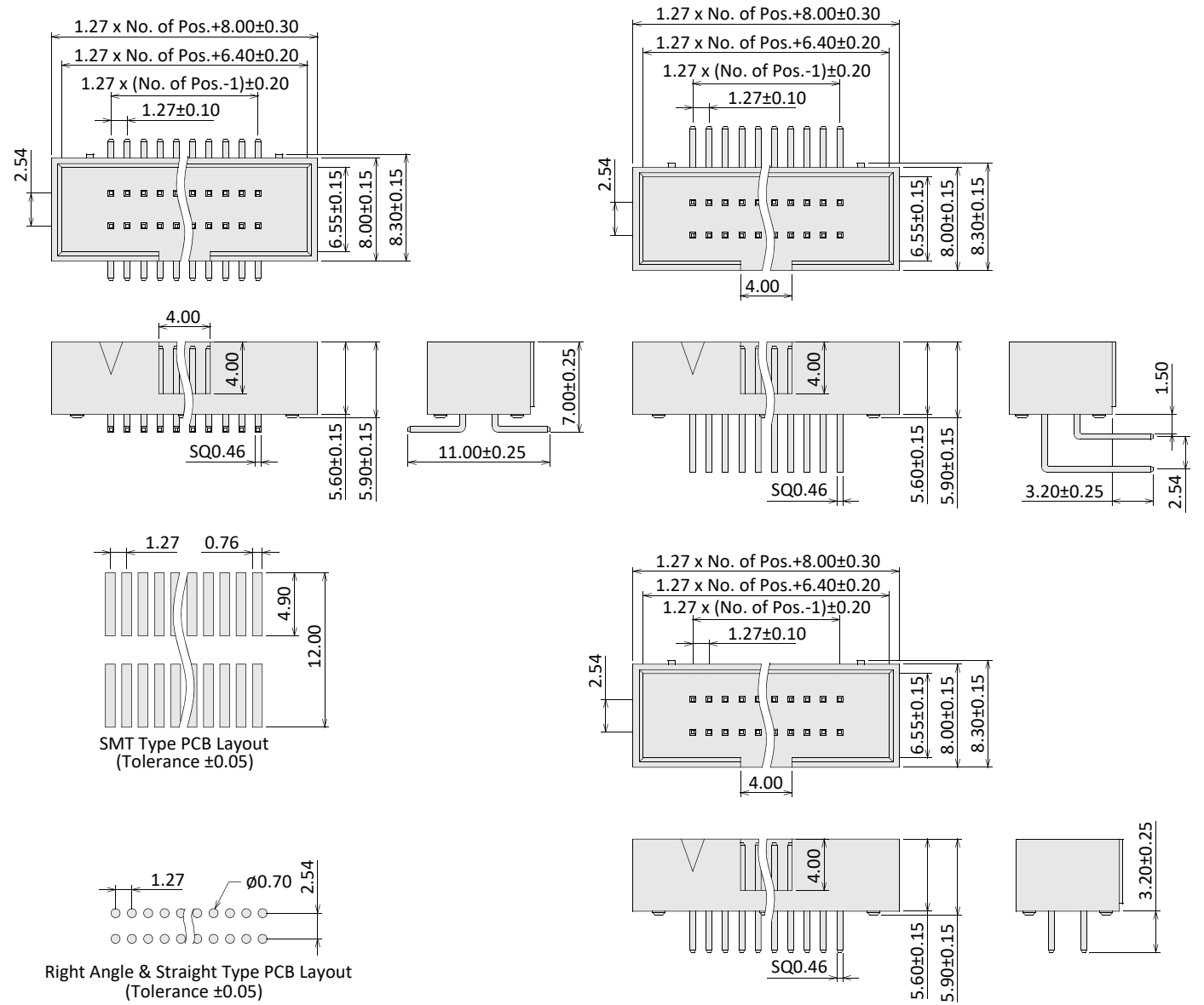
# Box Header

Header & Socket

Current Rate: 1A  
 Dielectric Voltage: 500V AC for one minute  
 Insulation Resistance: 1000MΩ Min.  
 Contact Resistance: 20mΩ Max.  
 Material Contact: Copper Alloy, Gold Plated  
 Material Insulator: Nylon 6T, UL94V-0  
 Operating Temperature: -40°C~+105°C



## Box Header SMT / Right Angle / Straight Type 1.27x2.54mm Pitch

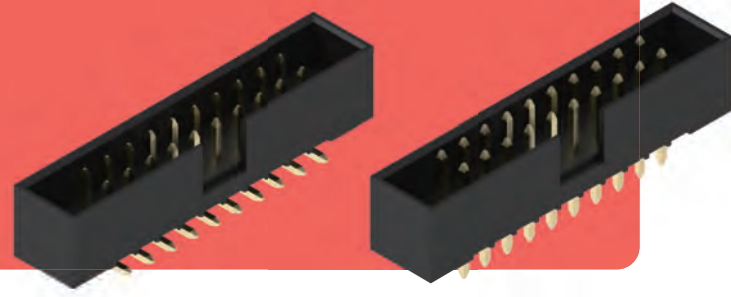


## Order Information

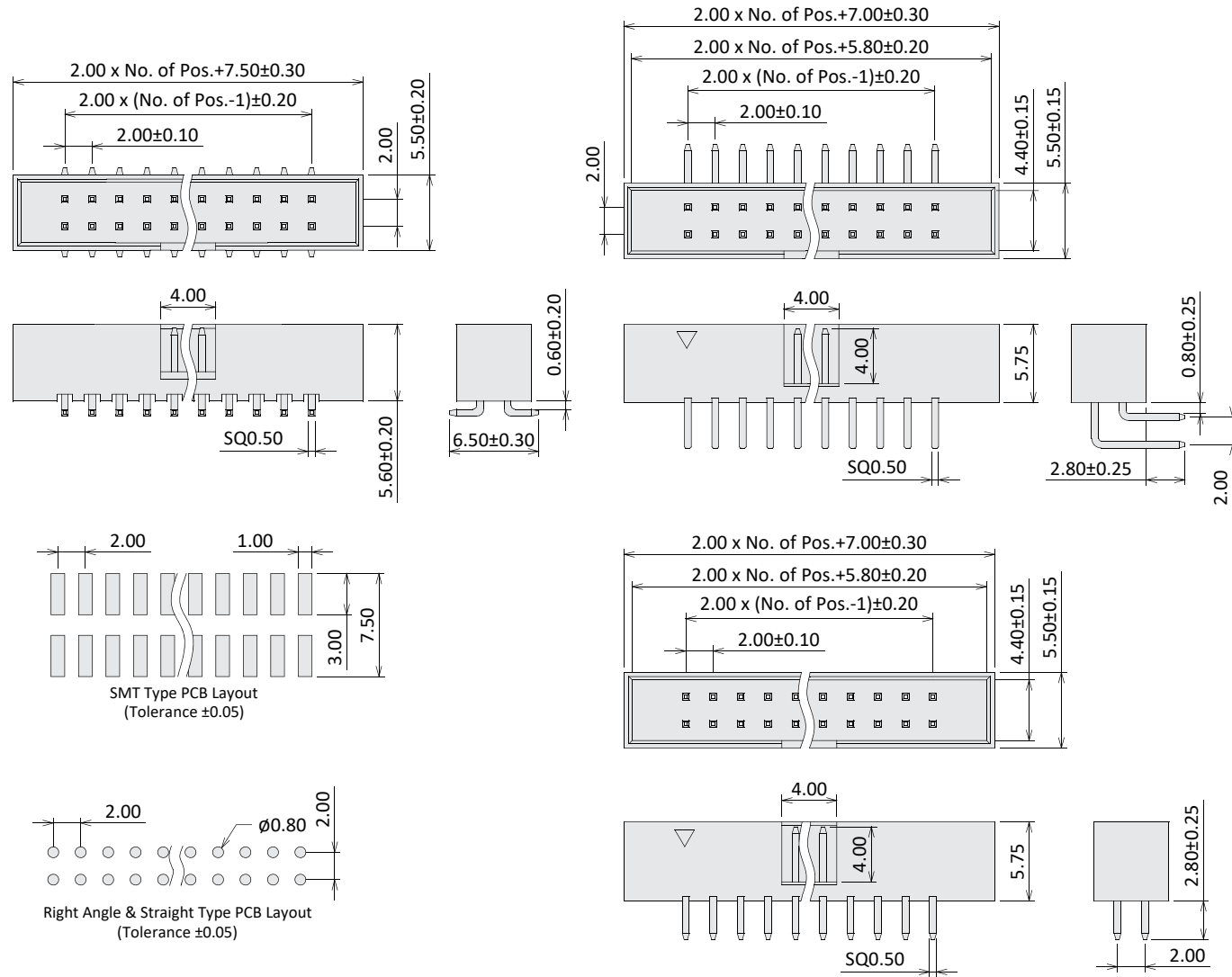
J X 21 XX 2 - XX X  
 M: SMT  
 R: Right Angle  
 L: Straight  
 1.27x2.54mm Pitch  
 G0: Gold Flash  
 S0: Gold / Tin  
 2: RoHS + NY 6T  
 No. of Contacts (06~64)  
 Y: Tray  
 T: Tube  
 P: Cap + Tube  
 R: Cap + Reel  
 (P / R for SMT)

# Box Header

Current Rate: 2A  
 Dielectric Voltage: 500V AC for one minute  
 Insulation Resistance: 1000MΩ Min.  
 Contact Resistance: 20mΩ Max.  
 Material Contact: Copper Alloy, Gold Plated  
 Material Insulator: Nylon 6T, UL94V-0  
 Operating Temperature: -40°C~+105°C



## Box Header SMT / Right Angle / Straight Type 2.00mm Pitch



## Order Information

J X 20 XX 2 - XX X

M: SMT  
R: Right Angle  
L: Straight

2.00mm Pitch

G0: Gold Flash  
S0: Gold / Tin

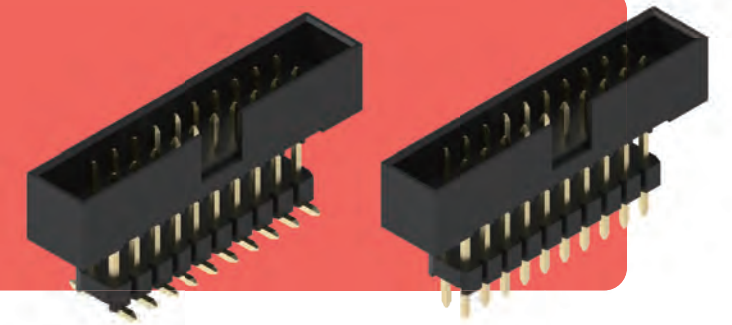
2: RoHS + NY 6T

No. of Contacts (06~68)

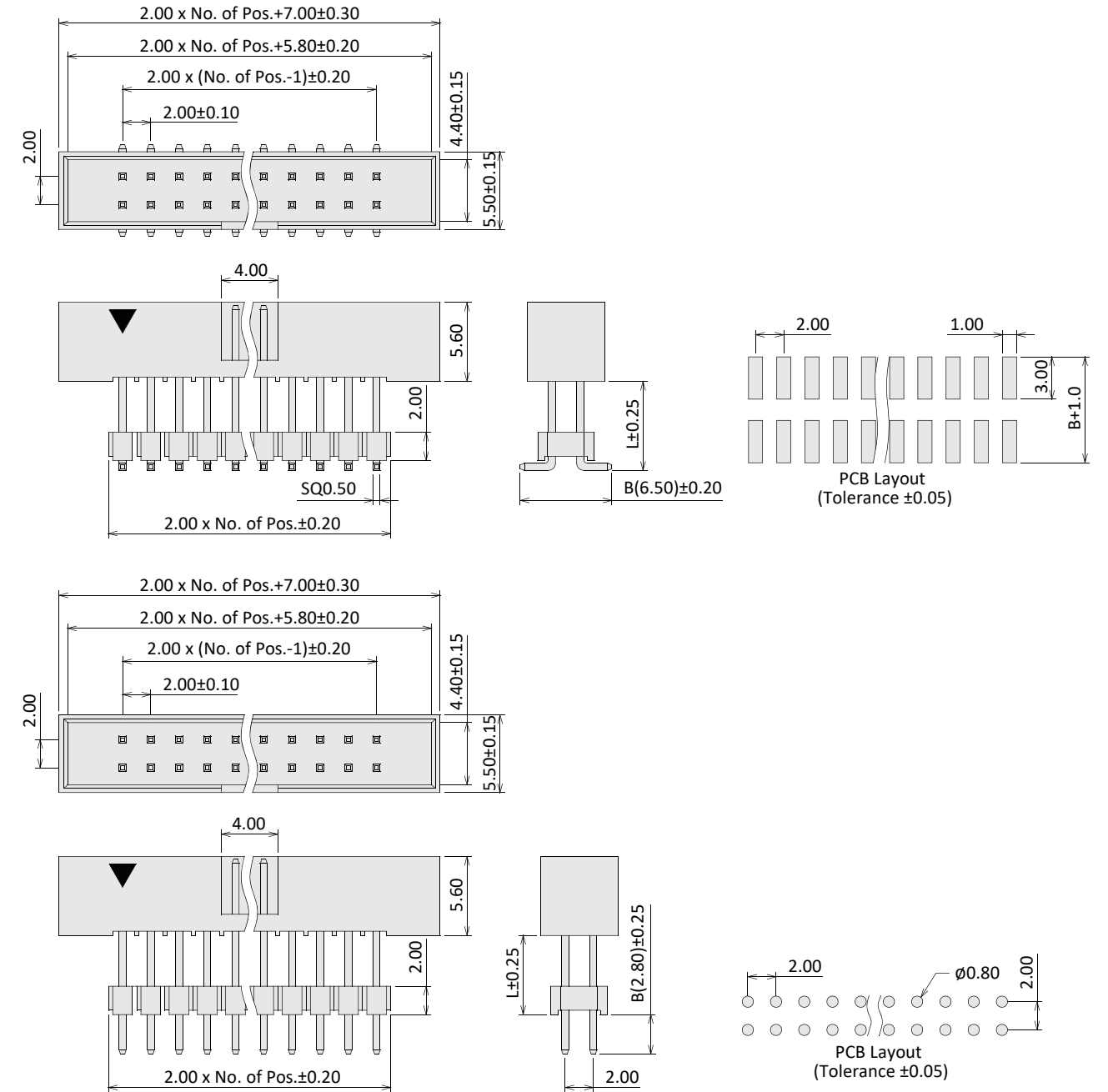
Y: Tray  
T: Tube  
P: Cap + Tube  
R: Cap + Reel  
(P / R for SMT)

# Box Header

Current Rate: 2A  
 Dielectric Voltage: 500V AC for one minute  
 Insulation Resistance: 1000MΩ Min.  
 Contact Resistance: 20mΩ Max.  
 Material Contact: Copper Alloy, Gold Plated  
 Material Insulator: Nylon 6T, UL94V-0  
 Operating Temperature: -40°C~+105°C



## Box Header Elevated SMT / Elevated Straight Type 2.00mm Pitch



## Order Information

J XX 20 XX 2 - XX - L/B X

EM: Elevated SMT  
EL: Elevated Straight

2.00mm Pitch

G0: Gold Flash  
S0: Gold / Tin

2: RoHS + NY 6T

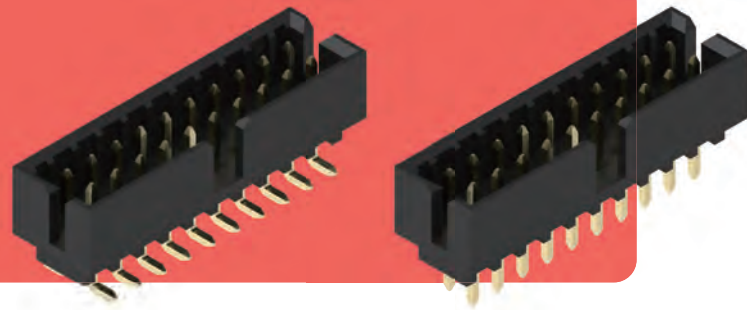
No. of Contacts (06~68)

Dimensions L, B

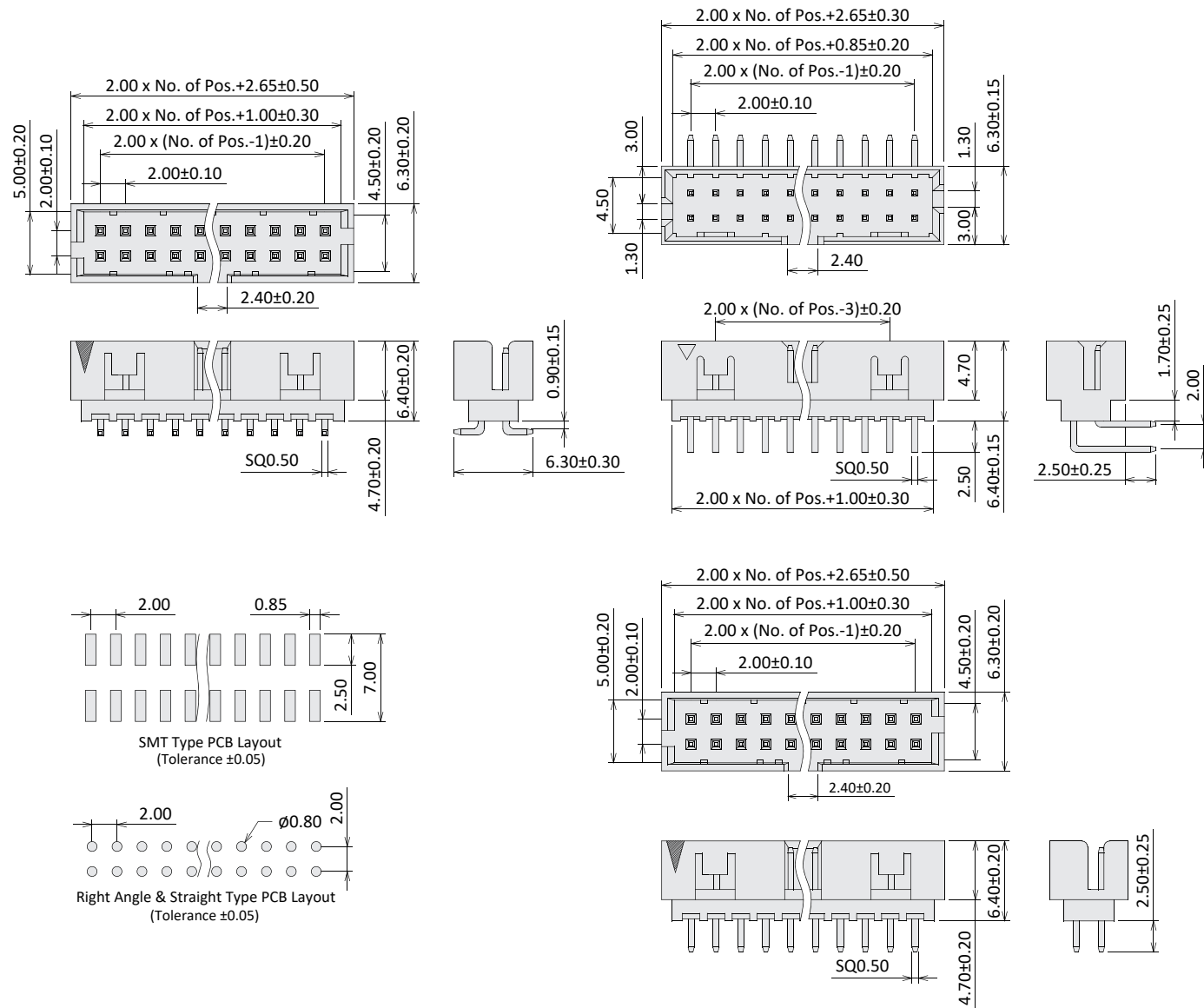
Y: Tray  
T: Tube  
P: Cap + Tube  
R: Cap + Reel  
(P / R for SMT)

# Box Header

Current Rate: 2A  
 Dielectric Voltage: 500V AC for one minute  
 Insulation Resistance: 1000MΩ Min.  
 Contact Resistance: 20mΩ Max.  
 Material Contact: Copper Alloy, Gold Plated  
 Material Insulator: Nylon 6T, UL94V-0  
 Operating Temperature: -40°C~+105°C



## Box Header SMT / Right Angle / Straight Type 2.00mm Pitch



## Order Information

JA X 20 XX 2 - XX X

M: SMT  
 R: Right Angle  
 L: Straight

2.00mm Pitch

GO: Gold Flash  
 SO: Gold / Tin

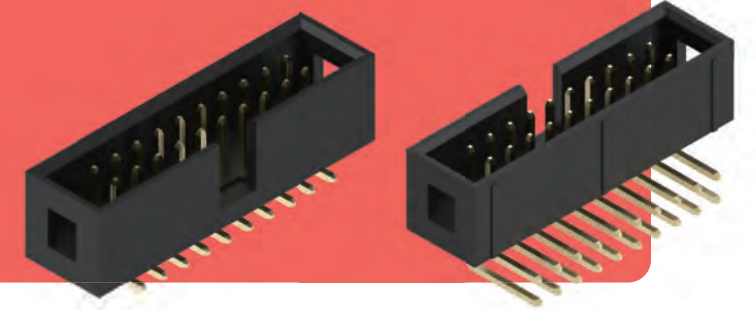
2: RoHS + NY 6T

No. of Contacts (10~60)

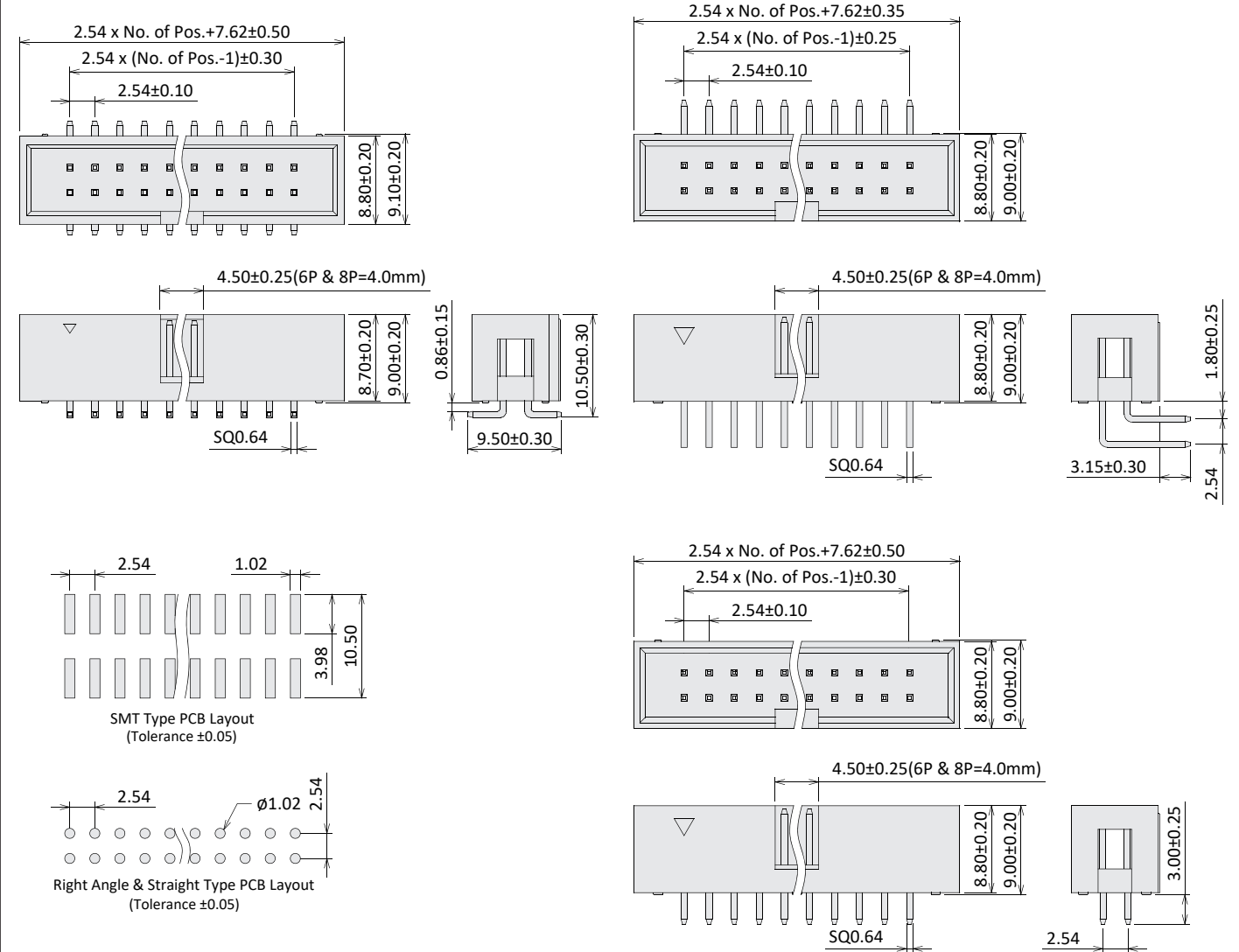
Y: Tray  
 T: Tube  
 P: Cap + Tube  
 R: Cap + Reel  
 (P / R for SMT)

# Box Header

Current Rate: 3A  
 Dielectric Voltage: 500V AC for one minute  
 Insulation Resistance: 1000MΩ Min.  
 Contact Resistance: 20mΩ Max.  
 Material Contact: Copper Alloy, Gold Plated  
 Material Insulator: PBT or NY 6T, UL94V-0  
 Operating Temperature: -40°C~+105°C



## Box Header SMT / Right Angle / Straight Type 2.54mm Pitch



## Order Information

J X 25 XX X - XX X

M: SMT  
 R: Right Angle  
 L: Straight

2.54mm Pitch

GO: Gold Flash  
 SO: Gold / Tin

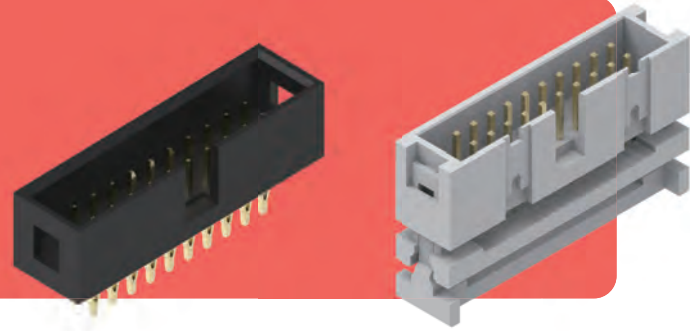
1: RoHS + PBT  
 2: RoHS + NY 6T  
 (NY 6T for SMT)

No. of Contacts (06~64)

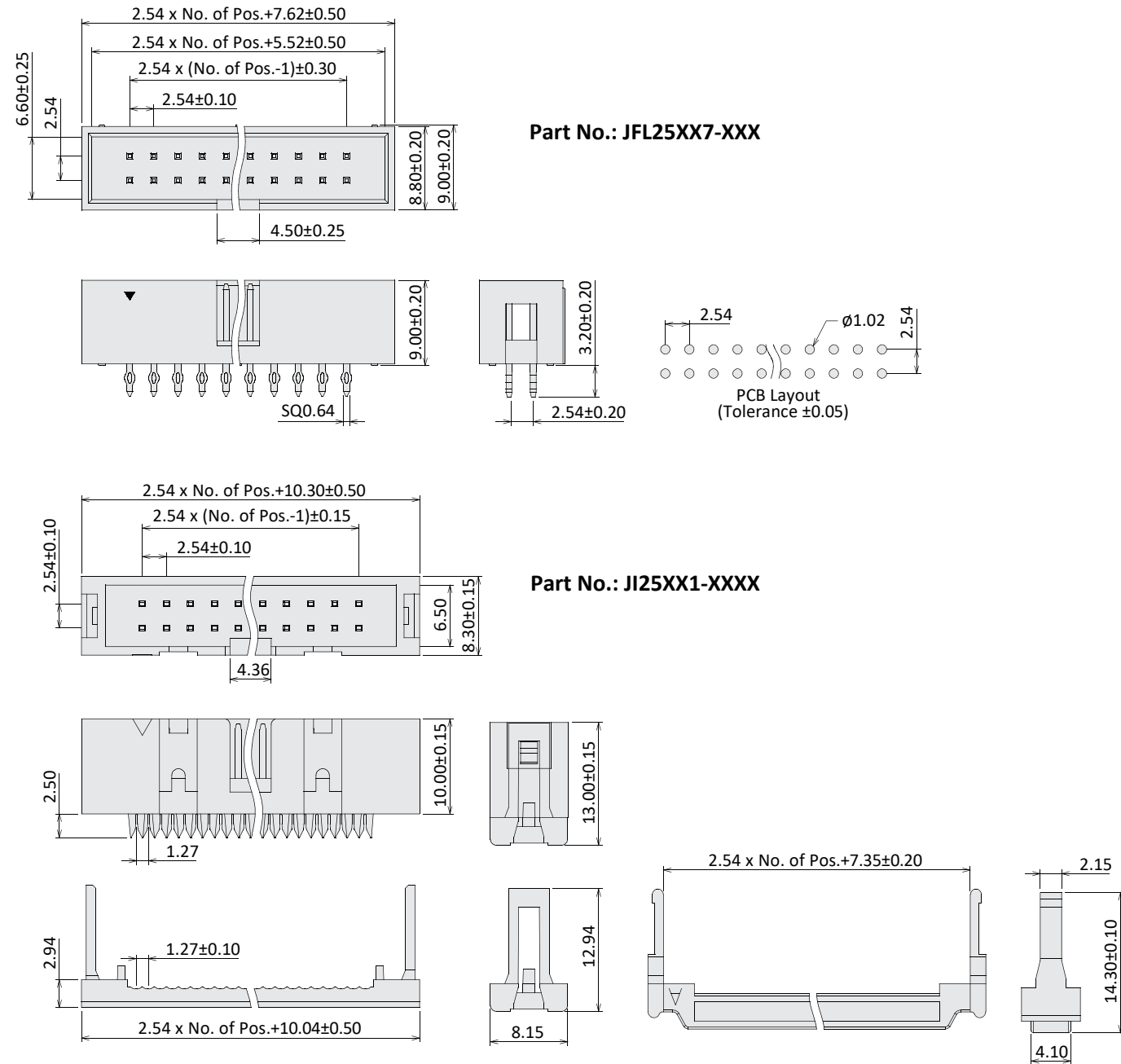
Y: Tray  
 T: Tube  
 P: Cap + Tube  
 R: Cap + Reel  
 (P / R for SMT)

# Box Header

Current Rate: 3A  
 Dielectric Voltage: 500V AC for one minute  
 Insulation Resistance: 1000MΩ Min.  
 Contact Resistance: 20mΩ Max.  
 Material Contact: Copper Alloy, Gold Plated  
 Material Insulator: PBT or NY 9T, UL94V-0  
 Operating Temperature: -40°C~+105°C



## Box Header Press Fit / IDC Type 2.54mm Pitch



## Order Information

J X 25 XX X - XX X X

FL: Press Fit  
 I: IDC

2.54mm Pitch

G0: Gold Flash  
 S0: Gold / Tin

1: RoHS + PBT  
 7: RoHS + NY 9T

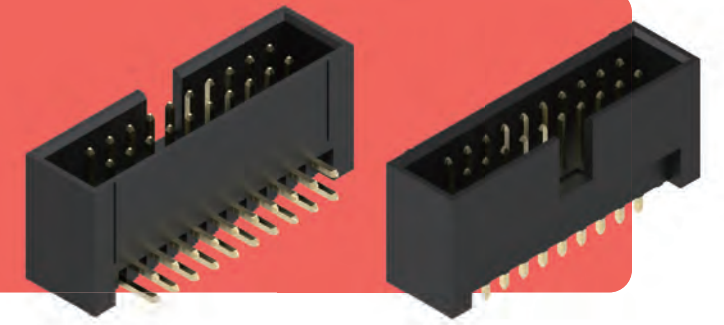
No. of Contacts (10~64)

Y: Tray  
 T: Tube

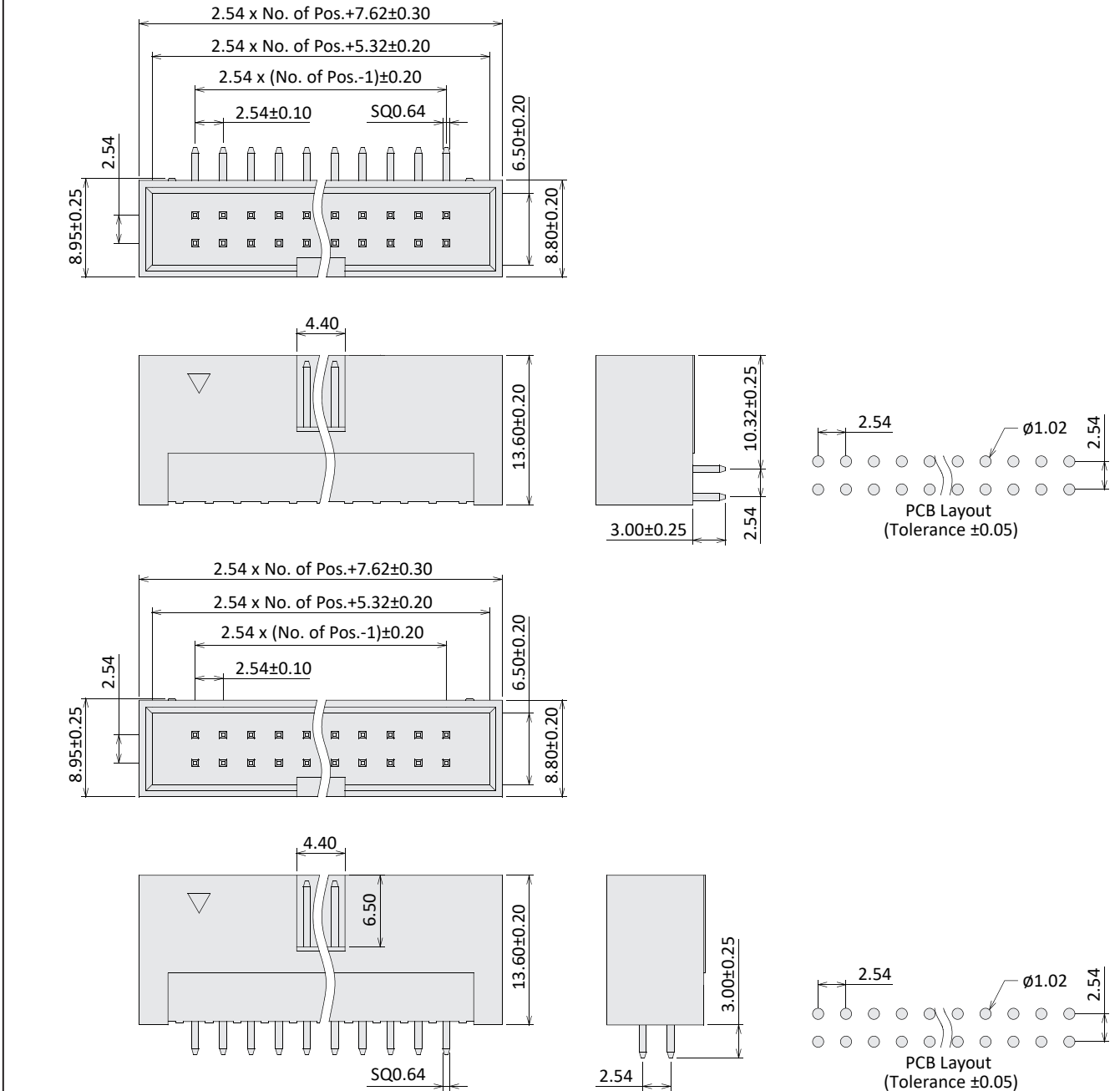
Blank: W/O SR  
 R: With SR (For IDC)

# Box Header

Current Rate: 3A  
 Dielectric Voltage: 500V AC for one minute  
 Insulation Resistance: 1000MΩ Min.  
 Contact Resistance: 20mΩ Max.  
 Material Contact: Copper Alloy, Gold Plated  
 Material Insulator: PBT or NY 6T, UL94V-0  
 Operating Temperature: -40°C~+105°C



## Box Header Right Angle / Straight Type 2.54mm Pitch



## Order Information

JA X 25 XX X - XX

R: Right Angle  
 L: Straight

2.54mm Pitch

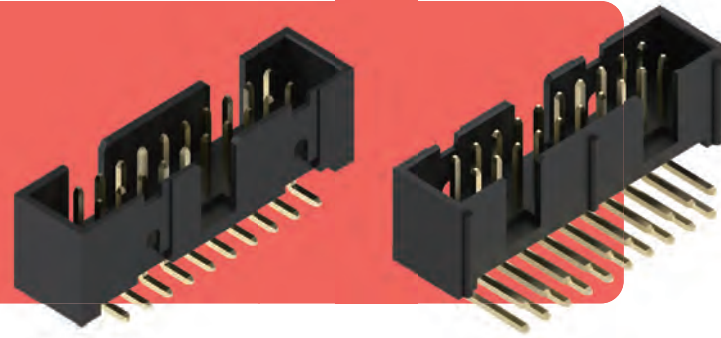
G0: Gold Flash  
 S0: Gold / Tin

1: RoHS + PBT  
 2: RoHS + NY 6T

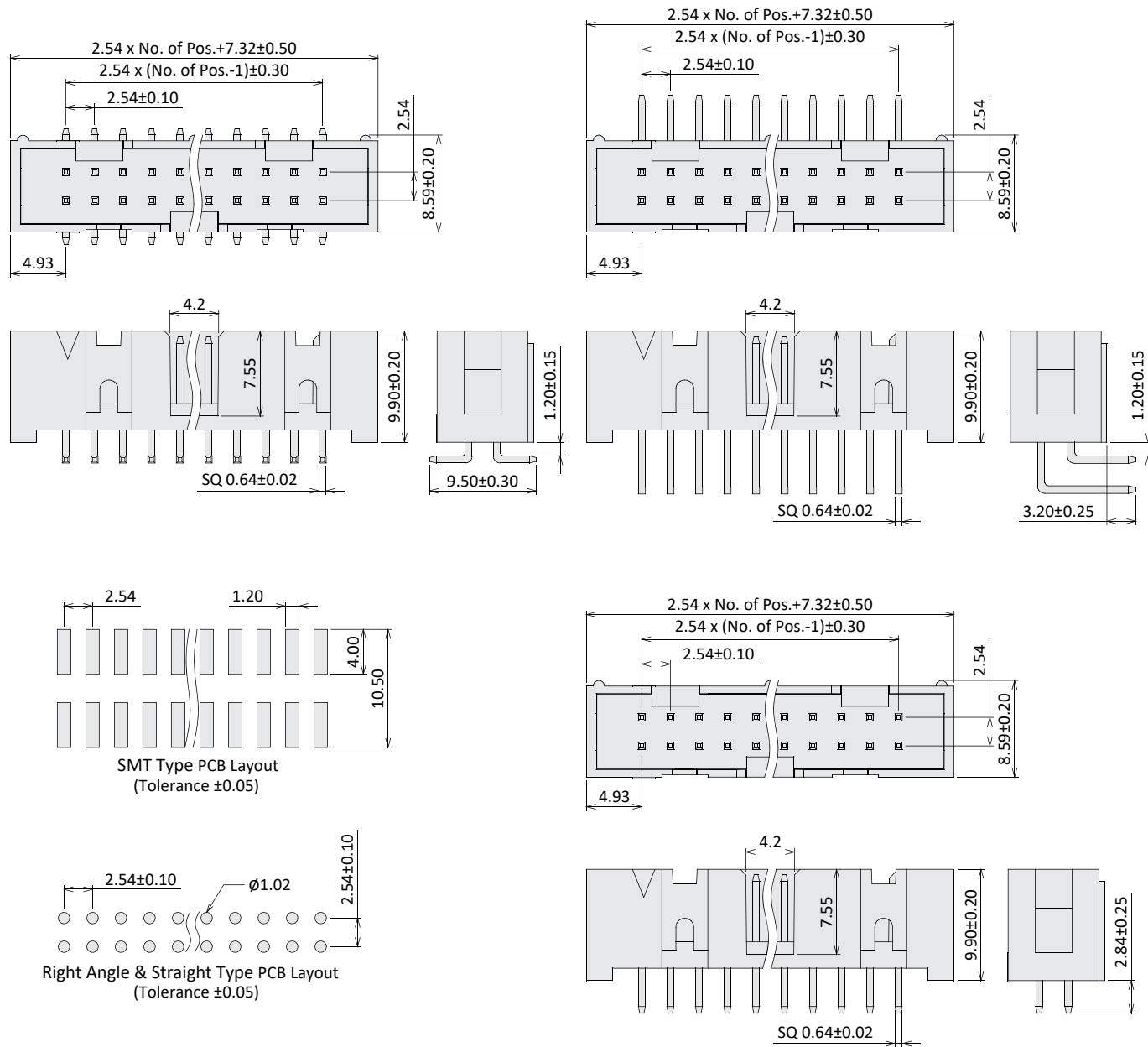
No. of Contacts (06~64)

# Box Header

Current Rate: 3A  
 Dielectric Voltage: 500V AC for one minute  
 Insulation Resistance: 1000MΩ Min.  
 Contact Resistance: 10mΩ Max.  
 Material Contact: Copper Alloy, Gold Plated  
 Material Insulator: Nylon 9T, UL94V-0  
 Operating Temperature: -40°C~+105°C



## Box Header SMT / Right Angle / Straight Type 2.54mm Pitch



## Order Information

JC

X

25

XX

7

-

XX

X

M: SMT  
 R: Right Angle  
 L: Straight

2.54mm Pitch

G0: Gold Flash  
 S0: Gold / Tin

7: RoHS + NY 9T

No. of Contacts  
 (10~50)

Y: Tray  
 T: Tube  
 P: Cap + Tube  
 R: Cap + Reel  
 (P / R for SMT)